

RETRA722 PRO HI-VIS SOFTSHELL JACKET **Outlet**
REGATTA
 PROFESSIONAL


SOFTSHELL

CARACTERISTICI PRINCIPALE
260 g/m²

Warm backed woven softshell

Water repellent finish

Conforms to EN ISO 20471:2013 +A1:2016

Class 2

Orange colourway also conforms to RIS-3279/

TOM

2 zipped lower pockets

Angled ID Reflection chevrons show which way wearer is facing

Inner zip and chin guard

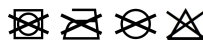
Max 25 Washes

Sugestii de personalizare:

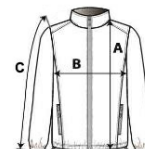
Broderie, Transfer termic, Serigrafie

Tara de origine:

China


SPECIFICAȚIE DIMENSIUNE (CM)

	S	M
Buc./📦	16	16
Lungimea corpului (A)	68	70.50
Latimea pieptului (B)	51	55
Lungimea manecii (C)	66	67


CULORI:

Orange/Navy

Yellow/Navy