

**AAMT498 UNISEX MOCK TWIST PULLOVER HOODED SWEATSHIRT****Outlet****American Apparel****POPIS**

285 g/m<sup>2</sup>  
 285.0 G/SqM  
 65% Combed Cotton / 35% Polyester  
 Relaxed fit  
 Hooded with White finished polyester drawcord  
 1x1 rib cuffs and bottom band  
 Kangaroo pocket  
 Side seam  
 Double-satin razor label

**Suggested Decoration:**

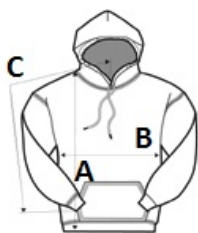
Embroidery

**Krajina pôvodu:**

China

**ROZMERY (CM)**

	<b>S</b>	<b>M</b>	<b>L</b>	<b>XL</b>	<b>2XL</b>
<b>Ks.</b>	12	12	12	12	12
<b>Dĺžka (A)</b>	70	72	75	77	80
<b>Šírka cez prsia (B)</b>	51	53	56	58	61
<b>Dĺžka rukáva (meraná od stredu chrbta) (C)</b>	66	67	68	70	71

**FARBY:**

 Peppered Lapis