

BCSMP22 B&C BLACK TIE SSL /MEN **Outlet**

POPIS

- 135 g/m²
- Stretch poplin
- Cut-away collar
- Cross stitched mother-of-pearl effect buttons
- Folded hem sleeves
- Short modern back yoke
- Inside lap seams for perfect finish
- Shorter length - can be worn untucked
- Curved bottom hem
- Darts at back panel

Certifikáty:

STANDARD
100

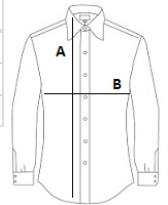
Krajina pôvodu:

Bangladesh



ROZMERY (CM)

	S	M
Ks./👤	10	10
Dĺžka (A)	73	74
Šírka cez prsia (B)	36,5	37



FARBY:

- Luxurious Red
- White