

115 g/m<sup>2</sup>

Popelín

Washable at 40°C

## POPIS:

Qualitative polycotton poplin with Easy Care finish

Cut-away collar

Cross stitched mother-of-pearl effect buttons

2-button adjustable cuffs

a. Angular cuffs

&amp; square-shaped gauntlets

b. Additional cufflink buttonholes

Left chest pocket

Back yoke with 2 overstitched side pleats

Inside lap seams for perfect finish

Horizontal last buttonhole

Curved bottom hem



TARIFNÝ KÓD: 62052000

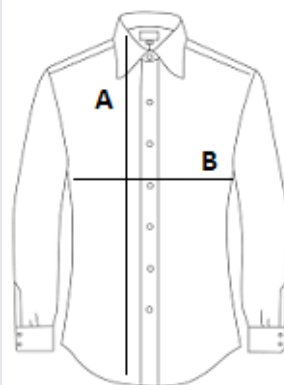


KRAJINA PÔVODU

Bangladesh

## ROZMERY (CM)

|                     | S     | M     | L     |
|---------------------|-------|-------|-------|
| Ks./☒               | 10    | 10    | 10    |
| Dĺžka (A)           | 80.00 | 81.00 | 83.00 |
| Šírka cez prsia (B) | 56.00 | 58,5  | 63,5  |



## FARBY:

■ Deep Red

■ Black