

BCSWT83 B&C SHARP LSL /WOMEN **Outlet****POPIS**

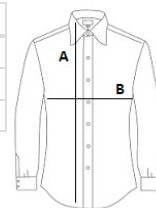
- 100% cotton twill with Easy Care finish
- Soft feminine collar
- Cross stitched mother-of-pearl effect buttons
- 2-button adjustable cuffs
  - a. Angular cuffs & thin square-gauntlets
  - b. Additional cufflink buttonholes
- Darts at bustline & back panel for a feminine shape
- Horizontal last buttonhole
- Curved bottom hem

**Certifikáty:**STANDARD  
100**Krajina pôvodu:**

Bangladesh

**ROZMERY (CM)**

	<b>XS</b>	<b>S</b>	<b>M</b>	<b>L</b>	<b>XL</b>
<b>Ks./</b>	10	10	10	10	10
<b>Dĺžka (A)</b>	65	66	67	68	69
<b>Šírka cez prsia (B)</b>	45,5	48	50,5	53	55,5

**FARBY:**

Black
  Navy
  White