

RETRA722 PRO HI-VIS SOFTSHELL JACKET **Outlet**
REGATTA
 PROFESSIONAL


SOFTSHELL

POPIS260 g/m²

Warm backed woven softshell

Water repellent finish

Conforms to EN ISO 20471:2013 +A1:2016

Class 2

Orange colourway also conforms to RIS-3279/

TOM

2 zipped lower pockets

Angled ID Reflection chevrons show which way wearer is facing

Inner zip and chin guard

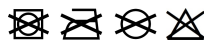
Max 25 Washes

Suggested Decoration:

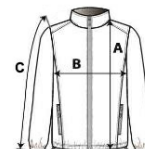
Embroidery, Heat transfer, Screen printing

Krajina pôvodu:

China

**ROZMERY (CM)**

	S	M
Ks./☞	16	16
Dĺžka (A)	68	70.50
Šírka cez prsia (B)	51	55
Dĺžka rukáva (C)	66	67

**FARBY:**
 Orange/Navy

 Yellow/Navy