

RETRA820 CLASSIC - SOFTSHELL BODYWARMER **Outlet**
REGATTA
 PROFESSIONAL

SOFTSHELL STRETCHLIGHT

WATER REPELLENT

POPIS240 g/m²**Fabric Information**

Lightweight jersey backed Softshell fabric

Softshell Stretch Light fabric technology

Durable water repellent finish

Wind resistant

Super soft handle

Quick drying

Lightweight and easy to wear

Special Features

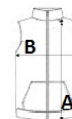
2 zipped lower pockets

Krajina pôvodu:

China

**ROZMERY (CM)**

	S	M	L	XL	2XL	3XL
Ks./📏	16	16	16	16	16	16
Dĺžka (A)	63.50	66	66	68.50	68.50	71
Šírka cez prsia (B)	46.50	50.50	54.50	58.50	62.50	67.50

**FARBY:**
 Black

 Navy