

RETRW249 WOMEN'S PRO PACKAWAY JACKET **Outlet**
**REGATTA**  
 PROFESSIONAL

**POPIS**

 80 g/m<sup>2</sup>
**Fabric Information**

Waterproof and breathable Isotex 10,000 lightweight fabric and a DWR (Durable Water Repellent) finish for all-weather protection

Breathability rating 10,000g/m2/24hrs

Durable water repellent finish

Windproof fabric

Taped seams

**Special Features**

Integral hood with adjusters

2 zipped lower pockets

Elasticated cuffs

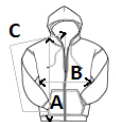
Packs away into stuff sack

**Krajina pôvodu:**

Myanmar


**ROZMERY (CM)**

	XL	2XL	3XL
Ks./📏	30	30	30
Dĺžka (A)	73,5	76	76
Šírka cez prsia (B)	59	62,7	65,3
Dĺžka rukáva (C)	67	67,5	68


**FARBY:**

Black

Navy