

BCSMP21 B&C BLACK TIE LSL /MEN **Outlet**

GLAVNE ZNAČILNOSTI

- 135 g/m²
- Stretch poplin
- 2-button cut-away collar
- Cross stitched mother-of-pearl effect buttons
- 2-button adjustable cuffs
 - a. Angular cuffs & square-shaped gauntlets
 - b. Additional cufflink buttonholes
- Short modern back yoke
- Inside lap seams for perfect finish
- Horizontal last buttonhole
- Square-shaped bottom hem side reinforcement
- Shorter length - can be worn untucked
- Curved bottom hem
- Darts at back panel

Certifikati:

STANDARD
100

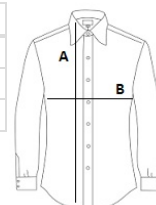
Država izvora:

Bangladesh



SPECIFIKACIJA VELIKOSTI (CM)

	S	M	L	XL	2XL	3XL	4XL
Kom./📦	10	10	10	10	10	10	10
Dolžina telesa (A)	73	74	76	78	79	81	82
Širina prsnega koša (B)	54	56,5	61,5	66,5	69	74	76,5



BARVE:

Black
 Coffee Bean
 Luxurious Red
 White