

BCSWO03 B&C OXFORD LSL /WOMEN **Outlet****GLAVNE ZNAČILNOSTI**135 g/m²

Cotton rich polycotton Oxford fabric with Easy Care finish

Soft feminine collar

Cross stitched mother-of-pearl effect buttons (except Oxford Blue: mother-of-pearl effect white buttons)

2-button adjustable cuffs

a. Rounded cuffs

b. Additional cufflink buttonholes

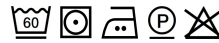
Darts at bustline & back panel for a feminine shape

Horizontal last buttonhole

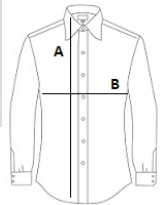
Curved bottom hem

Certifikati:STANDARD
100**Država izvora:**

Bangladesh

**SPECIFIKACIJA VELIKOSTI (CM)**

	XS	S
Kom./	10	10
Dolžina telesa (A)	65	66
Širina prsnega koša (B)	45,5	48

**BARVE:**

Silver Moon