

**IB296** LADIES' PIQUE POLO SHIRT **Novo**
**iDeal Basic**  
BRAND

**GLAVNE ZNAČILNOSTI**

180 g/m<sup>2</sup>  
 Solid colours: 100% cotton  
 Ideal Oxford Grey: 90% cotton / 10% viscose  
 Piqué knit  
 Straight fit 1x1 ribbed collar and sleeve hem  
 Placket with 4 tone-on-tone buttons  
 Tone-on-tone inner neck tape  
 Side slits  
 Double-needle bottom hem finish  
 Tear-away brand label

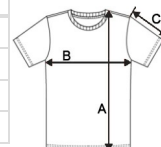
**Država izvora:**

Bangladesh

2026 : str. : page


**SPECIFIKACIJA VELIKOSTI (CM)**

	<b>XS</b>	<b>S</b>	<b>M</b>	<b>L</b>	<b>XL</b>	<b>2XL</b>
<b>Kom./</b>	50	50	50	50	50	50
<b>Dolžina telesa (A)</b>	61	63	65	67	69	71
<b>Širina prsnega koša (B)</b>	43	46	49	52	55	58
<b>Dolžina rokava (C)</b>	15.25	16.00	16.75	17.50	18.25	19.00


**BARVE:**

Ideal Atoll Blue	Ideal Black	Ideal Dark Grey	Ideal Fuchsia	Ideal Navy	Ideal Orange
Ideal Oxford Grey	Ideal Raw Natural	Ideal Red	Ideal Royal Blue	Ideal Sand	Ideal White